



**Sponsoring:**  
**Career Construction Institute and Conference**

Loyola Graduate Center, Columbia, Maryland  
March 27 – 29, 2019



**Career Construction Conference – Wednesday, March 27, 8:45 AM – 1 PM**

By Thelma Daley and CCI presenters

The 2<sup>nd</sup> annual, half-day Career Construction Conference (CCC) precedes the Career Construction Institute (CCI), providing brief training on specific topics. The CCC begins with a Keynote by Dr. Thelma Daley and includes 2 breakout sessions, each with 3 different presentations. The three **CCC Tracks are**: Curriculum Design in Career Construction; Career Construction for Clinical Practice; and Transforming Career Advising using Career Construction.

**4 CE Hours.** If not attending the CCI, register for the half-day CCC for \$100. If attending the CCC, the CCI is included.

**Career Construction Institute – 2 PM Wednesday, March 27 – 5 PM Friday, March 29**

by Mark Savickas, Suzanne Savickas, Jackie Peila-Shuster, Jamie Brant, Lee Richmond, and Evan Faidley

Spend 2.5 days learning Career Construction Counseling in depth with the experts. At the end of this institute, you will be able to use Career Construction Theory in your work as a counselor, clinician, advisor, or counselor educator. The institute includes mini-lectures, live demonstrations, and round table discussions that address practice guidelines, common misunderstandings, and opportunities for participants to conduct their own interviews with feedback from Career Construction experts. The Institute faculty are leading experts in career construction counseling and have published numerous journal articles and book chapters on Life Designing dialogues.

**17 CE Hours.** The cost of this 3-day institute is \$250 and includes the CCC. Meals are not included in the price.

	Before March 22	March 23 and After
CCC only	\$100	\$120
Professionals	\$250	\$280
Members*	\$225	\$255
Students	\$125	\$150

\* Member of PsyCoun Institute, Asia Pacific Career Development Association

**Loyola University Maryland-Columbia Graduate Center**  
**8890 McGaw Rd, Columbia, MD 21045**

**For more information: <http://PsyCoun.com/Career-Construction>**

**Wednesday, March 27 – Career Construction Conference**

8:15am - 8:45am	Registration and Coffee
8:45am – 9:45am	Keynote by Thelma Daley: <b>Unfolding</b>
9:45am – 11:15am	First Breakout Session
11:15am – 11:30am	Break/Networking
11:30am - 1:00pm	Second Breakout Session

**Wednesday, March 27 – Career Construction Institute**

1:00pm – 2:00pm	Lunch, Registration, and Coffee
2:00pm-3:00pm	Welcome - Introduction to Institute and Life Designing for Career Construction Theory
3:00pm - 3:15pm	Break/Networking
3:15pm - 5:00pm	Roundtables CCI Questions 1-5 (rotate through roundtables every 20 minutes)

**Thursday, March 28 – Career Construction Institute continued**

8:30am – 9:00am	Registration and Coffee
9:00am – 10:30am	Career Construction Interview (CCI) Live Demonstration
10:30am - 10:45am	Break/Networking
10:45am – 12:30pm	Career Construction Interview (CCI) Life Portrait
12:30pm – 1:30pm	Lunch
1:30pm – 2:00pm	Instructions for Group Work
2:30pm - 3:30pm	Practice CCI Session 1 (Small Group)
3:30pm - 3:45pm	Break/Networking
3:45pm – 5:00pm	Practice CCI Session 2 (Small Group)

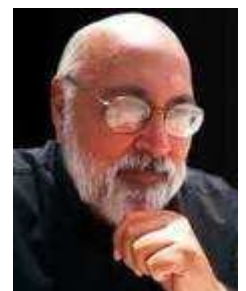
**Friday, March 29 – Career Construction Institute continued**

8:30am – 9:00am	Registration and Coffee
9:00am - 10:30am	Practice CCI Session 3 (Dyads)
10:30am - 10:45am	Break/Networking
10:45am - 11:15pm	Group processing and wrap-up
11:15am – 12:00pm	Creating the Life Portrait
12:00pm – 1:00pm	Lunch
1:00pm – 1:15pm	Instructions for Group Work
1:15pm - 2:00pm	Practice 1: Creating the Life Portrait (From 1st CCI)
2:00pm- 2:15pm	Break/Networking
2:15pm – 3:00pm	Practice 2: Creating the Life Portrait (From 2nd CCI)
3:00pm - 3:30pm	Practice 3: Partner Life Portrait (From Dyad CCI)
3:30pm - 5:00pm	Life Portrait Debrief and Institute Wrap-up



**Thelma T. Daley, Ph.D.**, is actively involved as a humanitarian, organization leader, and counseling professional. She is a distinguished Counselor- Educator and administrator, a National Certified Counselor, and an American Counseling Association Fellow. She has served as Director of the Counseling Program for the Baltimore County Board of Education, Assistant Professor of Counselor Education and Coordinator of Clinical Experiences at Loyola University, and as an adjunct professor at her Alma Mater, George Washington University. Dr. Daley has been Chair of the National Council of Negro Women, national director of Women in the NAACP, and national treasurer and president of her sorority, Delta Sigma Theta. Dr. Daley has two videos in the C-SPAN Video Library.

**Mark Savickas, Ph.D.**, is Professor Emeritus (Department of Family and Community Medicine) and Chair Emeritus (Department of Behavioral Sciences) at the Northeast Ohio Medical University. He continues to serve, since 1975, as Adjunct Professor of Counselor Education at Kent State University. He also serves as a Visiting Professor in the Institute for Employment Research at Warwick University in the United Kingdom. Previously he served as a Visiting Professor at Loughborough University, United Kingdom; Vrije University, Belgium; and University of Lisbon, Portugal. His 100 articles, 5 book chapters, and 500 presentations to professional groups have dealt with vocational

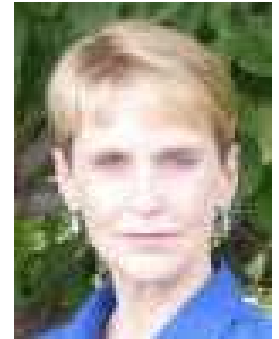


behavior and career counseling. He is a fellow of the American Counseling Association, American Psychological Association, the American Psychological Society, and the National Career Development Association. He has been awarded an honorary doctorate by the University of Lisbon (Portugal) and the University of Pretoria (South Africa).



**Suzanne Savickas, Ph.D., M.F.A., CRC, LPC**, earned an M.F.A. in Writing and Poetics from Naropa University and a doctorate in Counseling and Human Development Services at Kent State University and is currently a therapist in private practice. For over a decade, Suzanne has contributed to work in life design and career construction. She is the Chief Executive Officer of the Career Construction Institute and a founding faculty member of the institute.

**Jackie Peila-Shuster, Ph.D., LPC, NCC**, is an assistant professor in the Counseling and Career Development master's degree program in the School of Education at Colorado State University. She teaches courses in career development, supervises counseling internship and practicum, and serves as the career counseling specialization coordinator. Dr. Peila-Shuster holds a Ph.D. in Education and Human Resource Studies from Colorado State University, a master's degree specializing in Counseling and Career Development, and a B.S. in Occupational Therapy. Her areas of teaching and research interest include career counseling and development across the lifespan, counselor education, and strengths-based approaches to career and life design.



**Jamie Brant, M.A., LPC**, is a current Doctoral Candidate in Counselor Education and Supervision at Kent State University located in Kent, Ohio. Jamie has been working with Career Construction and Life Design for the last four years, specifically working with exploratory college students ranging from Freshman to Senior status. Jamie has implemented Career Construction and Life Design not only in an advising setting but also within the classroom, teaching college students how to design their future career by learning to self-explore their interests, traits, and their own life narrative through implementing the Career Construction Interview in an educational setting. Additionally, Jamie has utilized and continues to implement Career Construction and Life Design in a counseling setting, specifically working with individuals afflicted by addiction, ranging in ages from adolescence through retirement age.

**Lee J. Richmond, Ph.D.**, is a licensed psychologist in the State of Maryland, a Professor Emerita at Loyola University Maryland, and previously taught at Johns Hopkins University. Her books include co-editor of *Connections Between Spirit and Work*, co-author of *Soulwork: How to Find the Work You Love: How to Love the Work You Have*, and *What Brings You to Life?: Awakening Women's Spiritual Essence*.



**Evan Faidley** is a Ph.D. student at Kent State. As he pursues his doctorate, Evan will be serving as the graduate assistant to the Division of Graduate Studies, working with students in advanced degree programs on career orientation and organization programming. Evan also serves as an assistant lecturer of French at the University of Akron. 2016, Evan served as a delegate to Kent State as an international participant at the UNESCO Conference on Lifelong Guidance and Counseling at the University of Wroclaw, Institute of Pedagogy in Poland, as well as at the National Conservatory of Arts and Crafts, National Institute of Studies in Work and Career Counseling in Paris, France.

- PsyCoun has been approved by NBCC as an Approved Continuing Education Provider, ACEP No, 6813. PsyCoun is solely responsible for all aspects of the programs.

